

Yardbird Suite

Created using Mapping Tonal Harmony Pro

C_{MA7}⁷⁽⁹⁾

F_m⁷⁽⁹⁾

B^b7^(#11)

C_{MA7}⁷⁽⁹⁾

B^b7^(#11)

A7^(#9 b13)

C_I^{MA7}

IV_m⁷

^bVII⁷

I_{MA7}⁷

SUBV⁷/VI

V⁷/II

D7^(9 13)

G7^(9 13)

E_m^{7(b9)}

A7^(#9 b13)

D_m⁷⁽⁹⁾

G7^(9 13)

V⁷/V

V⁷

III_m⁷

V⁷/II

II_m⁷

V⁷

G7^(9 13)

C_{MA7}⁷⁽⁹⁾

C_{MA7}⁷⁽⁹⁾

B7^(#9 b13)

E_m^{7(b9)}

V⁷

I_{MA7}⁷

I_{MA7}⁷

V⁷/III

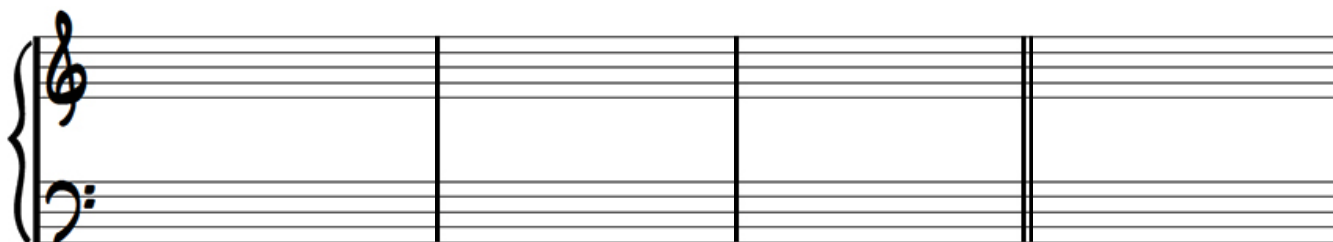
III_m⁷

F#m7b5 B7(#9 b13) Em7(b9) A7(#9 b13) Dm7(b9)



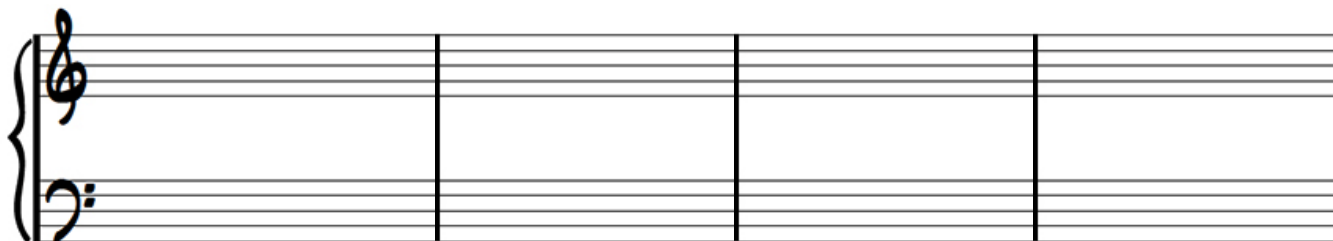
IIm7b5/III V7/III IIIIm7 V7/II IIm7

Em7b5 A7(#9 b13) D7(b9) Dm7(b9) G7(b9) Cmaj7(b9)



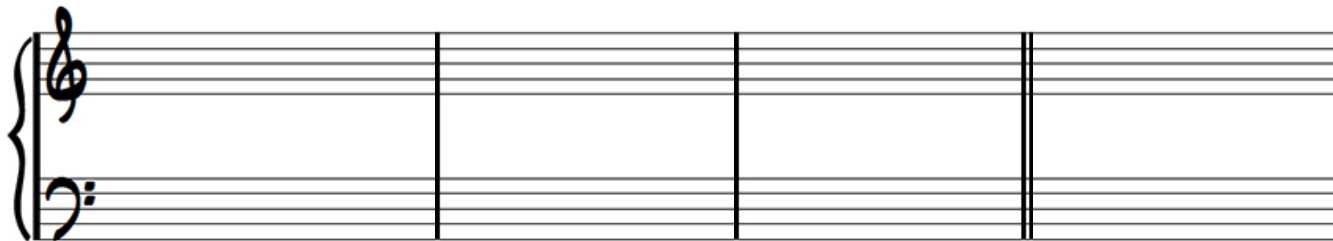
IIm7b5/II V7/II V7/V IIm7 V7 Imaj7

Fm7(b9) Bb7(#11) Cmaj7(b9) Bb7(#11) A7(#9 b13) D7(b9)



IVm7 bVII7 Imaj7 subV7/VI V7/II V7/V

Dm7(b9) G7(b9) Cmaj7(b9) Eb°7(b9) Dm7(b9) Db7(#11)



IIm7 V7 Imaj7 bII°7(b9)/II IIm7 subV7

